

Date Purchased _____ Machine Serial No. _____

Size of Pipe Cart _____ Options _____

The key number system in this parts book is arranged as follows:

- ◎ -- Key numbers with two circles denotes main assemblies.
- -- Key numbers with one circle are individual parts.

Please order parts by part number.



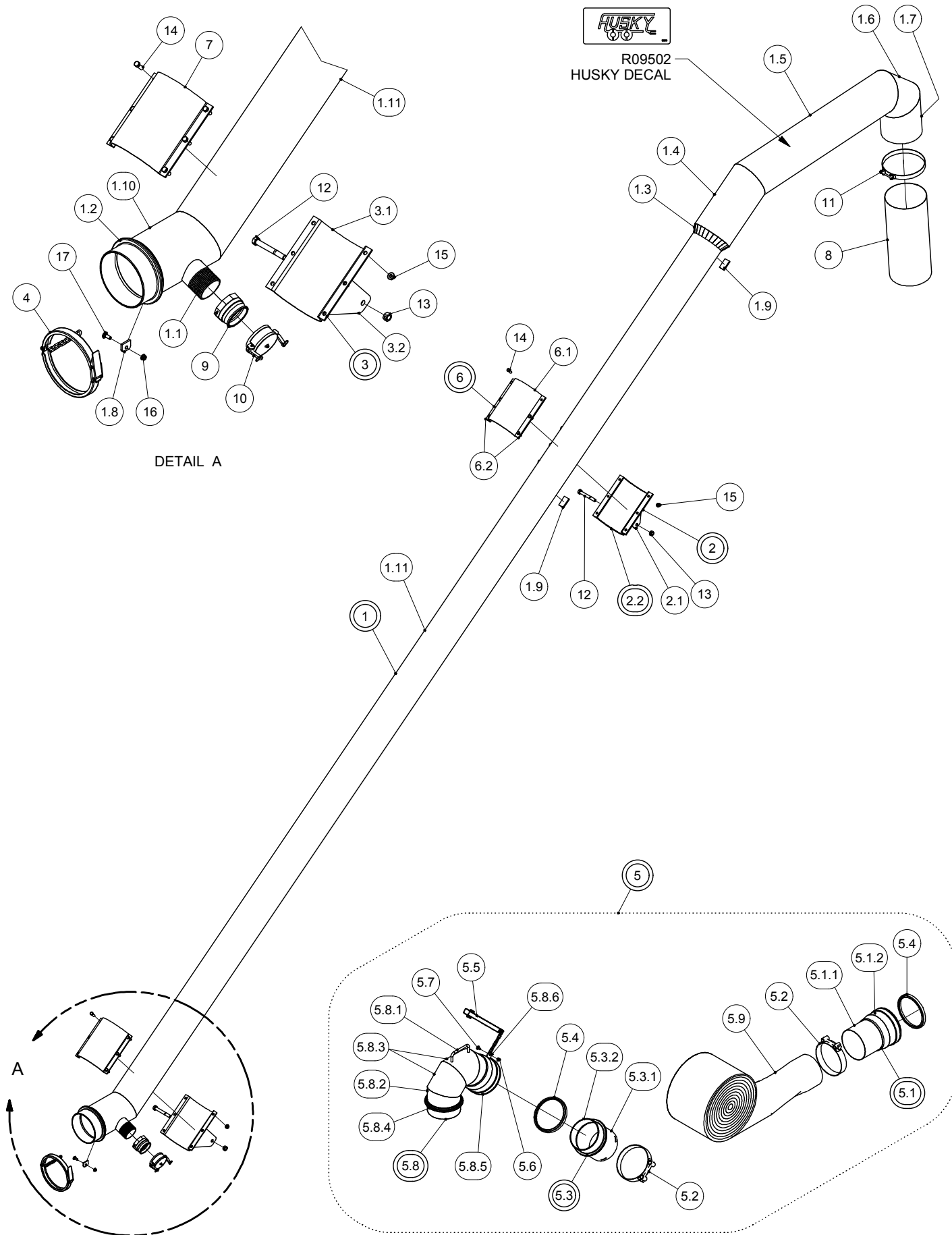
Pipe Cart

248-00-00-000 8"

OPERATING INSTRUCTIONS:

1. Make sure clamps are securely fastened before operating to ensure hose won't blow off during filling
2. Always check tire pressure and wheel bolt torque before towing.
3. When towing lower Pipe all the way down for clearance from overhead power wires
4. Wash Pipe Cart off after each use. This will extend the life of the Pipe.
5. Depending on the amount of Highway travel the wheel bearings shall be greased annually
6. Make sure all manure is drained from pipe prior to freezing conditions

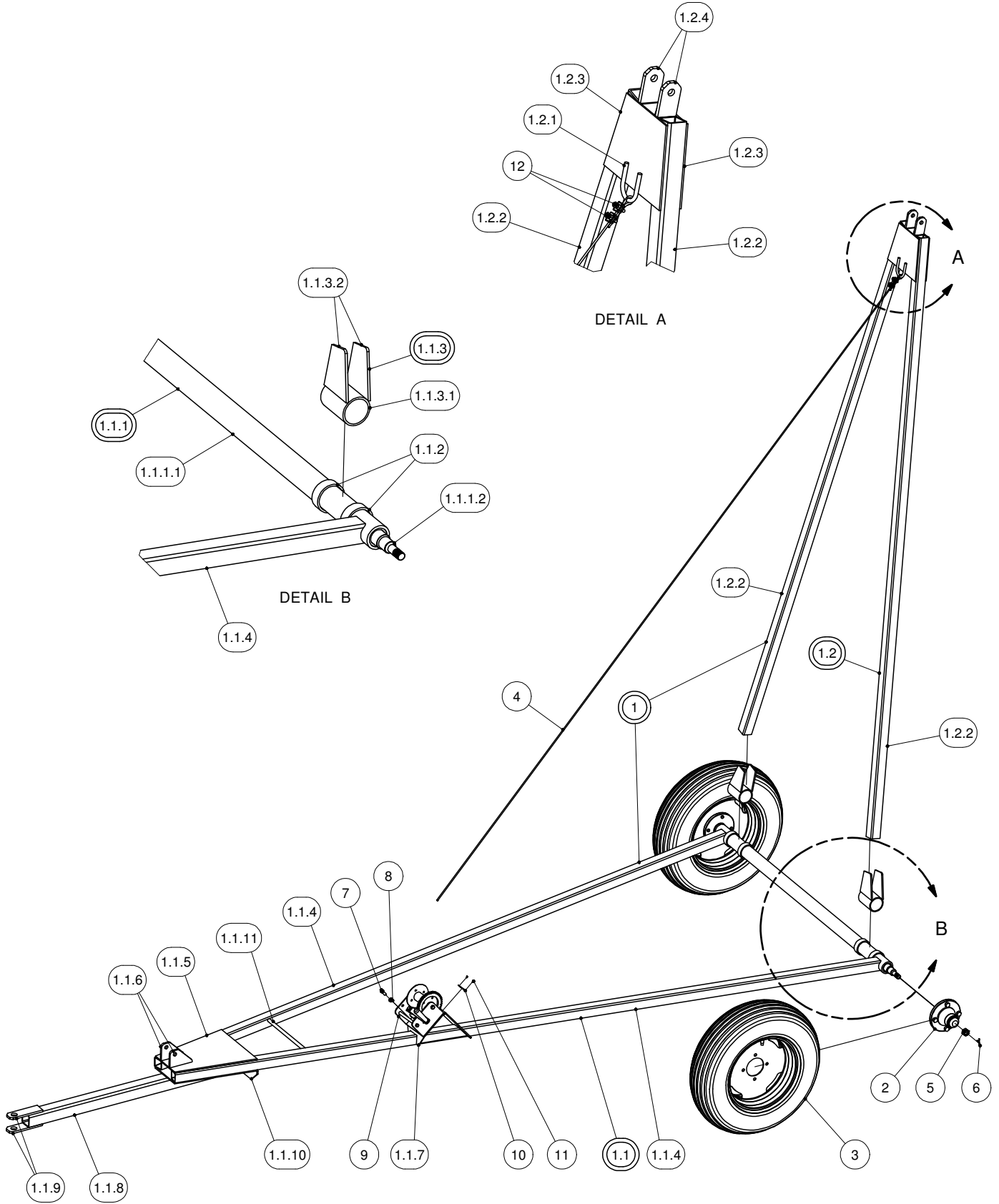
8" DISCHARGE PIPE



8" DISCHARGE PIPE

PARTS LIST				PARTS LIST			
ITEM	PART NUMBER	DESCRIPTION	QTY	ITEM	PART NUMBER	DESCRIPTION	QTY
1	248-34-00-000	8 TO 10" DISCH PIPE ASSY W/STR SECTION	1	5.3.2	R02989	8" CIRCLE LOCK, MALE ITHPM800	1
				5.4	R02360	8" SQ HUSKY GASKET	2
1.1	R02097	3" x 4" LONG TOE ALUM. NIPPLE	1	5.5	244-09-00-000	8" CLAMP & CHAIN ASSY	1
1.2	R02989	8" CIRCLE LOCK, MALE ITHPM800	1	5.6	R07794	3/8-16 UNC FLANGE NUT - ZINC	1
1.3	248-32-00-105	ALUMINUM CONE-8" TO 10" X 2" HIGH	2	5.7	R07776	3/8-16 UNC x 0.75 CARRIAGE BOLT Gr.5	1
1.4	248-34-00-120	10" ALUM DISCH PIPE-SECTION "A"	1	5.8	248-06-00-000	8" - 45° ALUMINUM PUMP ELBOW w/ RING ASSY	1
1.5	248-34-00-121	10" ALUM DISCHARGE PIPE-SECTION "B"	1				
1.6	248-34-00-122	10" ALUM DISCHARGE PIPE-SECTION " C"	1	5.8.1	248-24-00-074	ALUMINUM HANDLE	1
1.7	248-34-00-123	10" ALUM DISCHARGE PIPE-SECTION "D"	1	5.8.2	248-06-00-024	ELBOW PC - A	2
1.8	248-05-00-036	CHAIN LUG	1	5.8.3	248-06-00-078	ELBOW PC - B	2
1.9	248-05-00-038	STOP LUG	2	5.8.4	R02989	8" CIRCLE LOCK, MALE ITHPM800	1
1.10	248-34-00-119	8" BOTTOM PIPE SECTION	1	5.8.5	R02982	8" RW COUPLER-NARROW	1
1.11	248-34-00-118	8" DISCHARGE PIPE	1	5.8.6	248-05-00-036	CHAIN LUG	1
2	248-04-00-000	UPPER PIPE SLIDING CLAMP ASSY	1	5.9	248-00-00-021	8" PVC LAYFLAT HOSE	1
2.1	248-33-01-113	OUTER FRAME PIVOT BRKT	2	6	248-04-01-000	UPPER PIPE SLIDING CLAMP ASSY	1
2.2	248-04-01-000	UPPER PIPE SLIDING CLAMP ASSY	1	6.1	248-04-01-018	UPPER CLAMP TUBE	1
3	248-03-00-000	LOWER PIPE CLAMP ASSY	1	6.2	248-04-01-019	UPPER CLAMP BOLT PLATE	2
3.1	242-00-00-221	CONE CLAMP ON BRKT	1	7	242-00-00-221	CONE CLAMP ON BRKT	1
3.2	248-03-00-050	LOWER CLAMP PIVOT BRKT	2	8	248-00-00-070	10"FLEX HOSE FOR TOP OF PIPE CART	1
4	244-09-00-000	8" CLAMP & CHAIN ASSY	1	9	R02778	3" CAMLOCK M->F NPT	1
4.1	R02488	8" RINGLOCK CLAMP	1	10	R02784	3" F CAMLOCK CAP	1
4.2	250-97-00-297	CLAMP CHAIN	1	11	R02492	10" SUPER CLAMP	1
5	248-25-00-000	8" LAYFLAT HOSE W/ENDS KIT	1	12	R07652	5/8-11 UNC x 5 HEX BOLT GR.5	2
5.1	248-14-00-000	BELL AND DISCHARGE PIPE ASSY	1	13	R07887	5/8-11 UNC 2-WAY LOCK NUT - ZINC	2
5.1.1	248-14-00-034	8" EXTENSION PIPE	1	14	R07671	7/16-14 UNC x 1.25 HEX BOLT GR.5	12
5.1.2	R02982	8" RW COUPLER-NARROW	1	15	R07879	7/16-14 UNC FLANGE NUT - ZINC	12
5.2	R02484	8" SUCTION HOSE CLAMP	2	16	R07794	3/8-16 UNC FLANGE NUT - ZINC	1
5.3	248-17-00-000	8"ALUMINUM EXT PIPE W/RING ASSY	1	17	R07721	3/8-16 UNC x 1 CARRIAGE BOLT Gr.5	1
5.3.1	248-17-00-051	8" ALUMINUM EXTENSION PIPE	1				

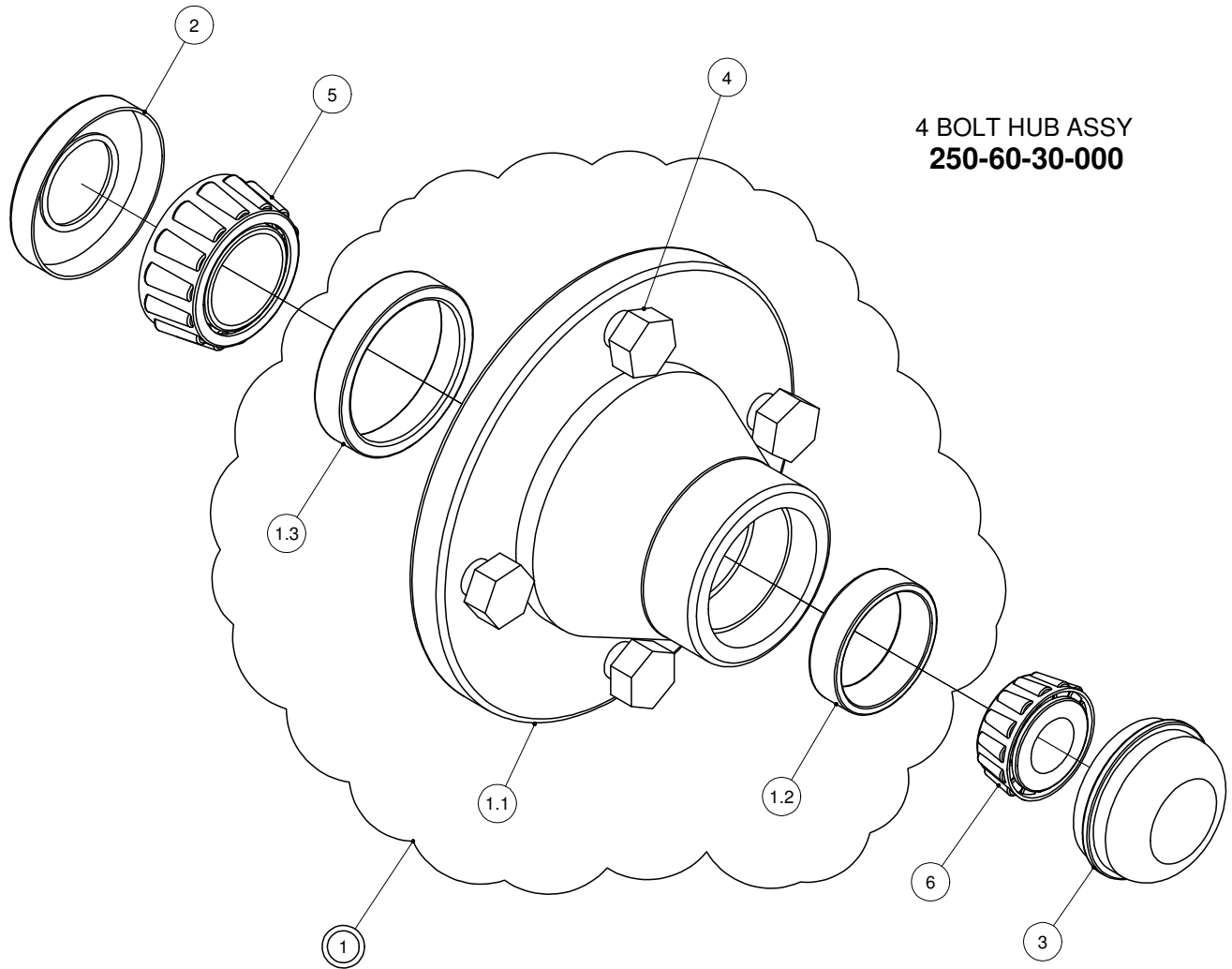
PIPE CART FRAME



PIPE CART FRAME

PARTS LIST			
ITEM	PART NUMBER	DESCRIPTION	QTY
1	248-33-00-000	2012 PIPE CART FRAME KIT	1
1.1	248-33-01-000	BASE FRAME ASSY W/ PIVOT ASSY	1
1.1.1	248-01-03-000	AXLE ASSY	1
1.1.1.1	248-01-03-023	AXLE TUBE	1
1.1.1.2	250-64-27-000	SPINDLE ASSY	2
1.1.2	248-01-00-014	STOP TUBE	4
1.1.3	248-33-02-000	INNER PIVOT ASSY	2
1.1.3.1	248-01-02-009	AXLE MOUNT TUBE	1
1.1.3.2	248-33-02-114	PIVOT SLEEVE STRAP	2
1.1.4	248-33-01-109	OUTER FRAME ARM	2
1.1.5	248-33-01-112	TOP GUSSET	1
1.1.6	248-33-01-113	OUTER FRAME PIVOT BRKT	2
1.1.7	248-01-01-037	WINCH BRKT	1
1.1.8	248-33-01-129	TONGUE TUBE	1
1.1.9	206-02-00-014	TONGE PLATE	2
1.1.10	248-33-01-130	LOWER GUSSET	1
1.1.11	248-35-00-124	STOP BAR	1
1.2	248-33-03-000	INNER FRAME ASSY	1
1.2.1	248-01-02-012	CABLE BRKT	1
1.2.2	248-33-03-115	INNER FRAME LEG	2
1.2.3	248-33-03-116	INNER FRAME GUSSET	2
1.2.4	248-33-03-117	INNER FRAME PIVOT BRKT	2
2	250-60-30-000	H-411 HUB COMPLETE	2
3	250-65-00-000	TIRE & WHEEL ASSY - 5.9 x 15	2
4	248-00-00-013	LIFT CABLE	1
5	R20142	SLOTTED HEX NUT	2
6	R08002	5/32 x 1 1/2 COTTER PIN	2
7	R07619	3/8-16 UNC x 1 HEX BOLT GR.5	3
8	R07794	3/8-16 UNC FLANGE NUT - ZINC	3
9	R10350	1 TON WORM GEAR WINCH	1
10	R09071	SERIAL NUMBER PLATE	1
11	R08152	#6 x 1/4" PAN HD SOCKET SCREW	2
12	R08077	3/16" CABLE CLAMP	2

H-411 HUB COMPLETE



PARTS LIST			
ITEM	PART NUMBER	DESCRIPTION	QTY
1	R20139	H-411 HUBS w/ CUPS	1
1.1	R20160	H411-4 BOLT HUB	1
1.2	R20130	H411 LM11910 O.CUP	1
1.3	R20129	H411 LM67010 I.CUP	1
2	R20144	OIL SEAL CRSE11	1
3	R20143	DUST CAP	1
4	R20145	WB55 1/2 x 1 WHEEL BOLT	4
5	R20159	LM67048 INNER CONE 1.25" BORE	1
6	R20158	LM11949 OUTER CONE .75" BORE	1

This Page is Intentionally Left Blank

GUARANTEE

All Husky Farm Equipment manufactured by Husky Farm Equipment Limited is guaranteed. Guarantee covers all the replacement cost or repair of all parts said to be defective from manufacture. Guarantee also covers labour installing said parts, if installed at Husky Manufacturing plant. Time and use is the essence of the guarantee. If equipment is used on a private property for an individual's use, guarantee will be in effect for twelve months from date of invoice. If equipment is used for commercial use to do custom work for money then guarantee will be in effect for three months only from date of invoice.

EXEMPTIONS FROM GUARANTEE

Cost of transportation of equipment to or from Husky Farm Equipment Limited either by customer or by Husky's service staff or cost of mail or public transportation is not covered. Tires and electric or hydraulic motors are covered by manufacturer's warranty and although Husky may assist to get warranty, Husky will not be responsible other than that allowed by manufacturer's warranty. Items subject to normal wear from use not covered by guarantee if faulty part is simply worn.