

Date Purchased _____ Machine Serial No. _____

Size of Pipe Cart _____ Options _____

The key number system in this parts book is arranged as follows:

- ◎ -- Key numbers with two circles denotes main assemblies.
- -- Key numbers with one circle are individual parts.

Please order parts by part number.



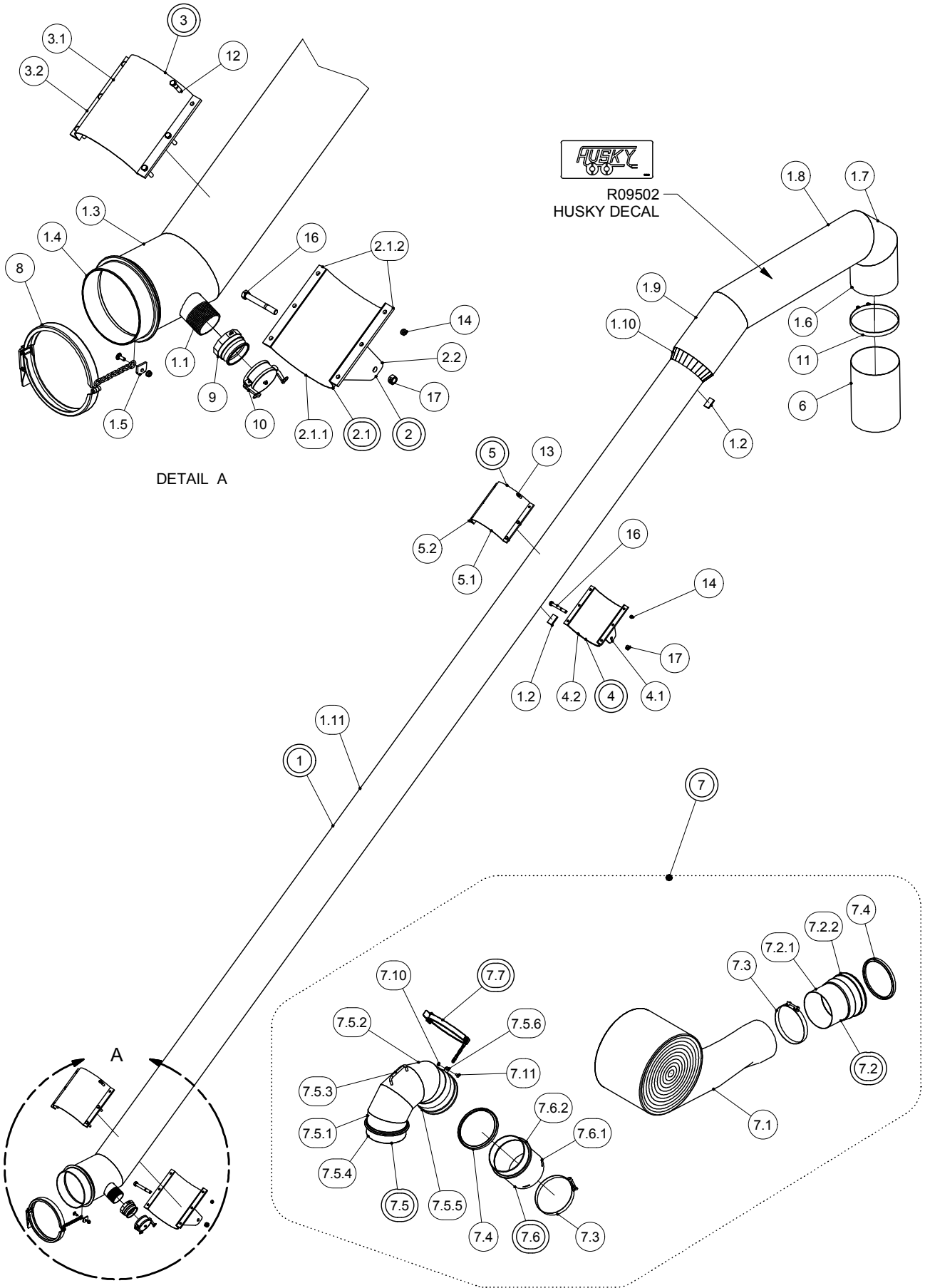
Pipe Cart

249-00-00-000 10"

OPERATING INSTRUCTIONS:

1. Make sure clamps are securely fastened before operating to ensure hose won't blow off during filling
2. Always check tire pressure and wheel bolt torque before towing.
3. When towing lower Pipe all the way down for clearance from overhead power wires
4. Wash Pipe Cart off after each use. This will extend the life of the Pipe.
5. Depending on the amount of Highway travel the wheel bearings shall be greased annually
6. Make sure all manure is drained from pipe prior to freezing conditions

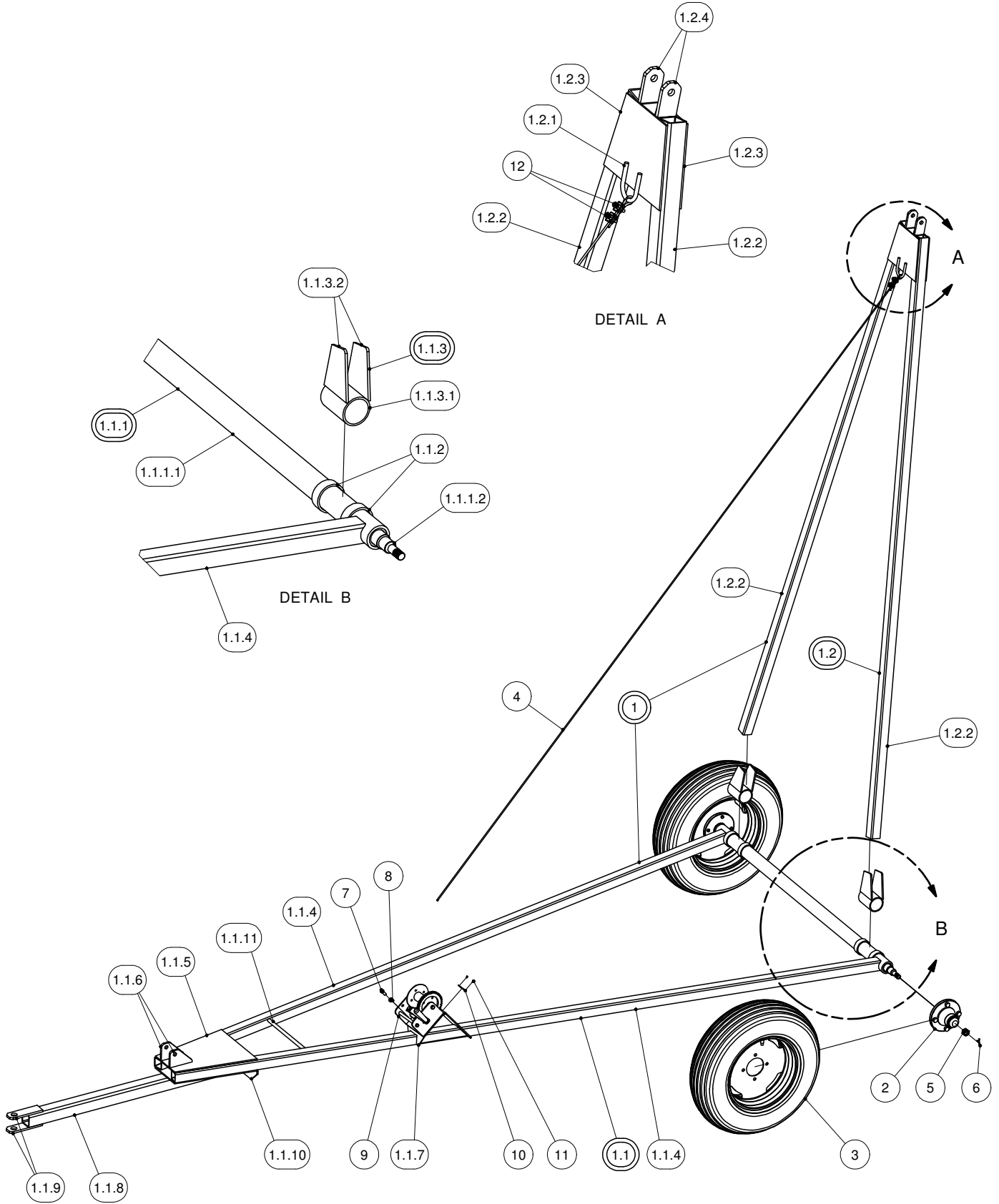
10" DISCHARGE PIPE



10" DISCHARGE PIPE

PARTS LIST				PARTS LIST			
ITEM	PART NUMBER	DESCRIPTION	QTY	ITEM	PART NUMBER	DESCRIPTION	QTY
1	248-37-00-000	10" DISCH PIPE ASSY w/ 12" TOP	1	7.2	248-15-00-000	10" BELL AND EXTENSION PIPE ASSY	1
1.1	R02097	3" x 4" LONG TOE ALUM. NIPPLE	1	7.2.1	248-15-00-035	10" EXTENSION PIPE	1
1.2	248-05-00-038	STOP LUG	2	7.2.2	R02983	10" RW COUPLER-NARROW	1
1.3	248-35-00-132	10" ALUM DISCHARGE PIPE-SECTION "D"	1	7.3	R02492	10" SUPER CLAMP	2
				7.4	R02849	10" RW GASKET	2
1.4	R02990	10" CIRCLE LOCK, MALE ITHPM1000	1	7.5	248-24-00-000	10" ALUMINUM ELBOW @ 44° ANGLE	1
1.5	248-05-00-036	CHAIN LUG	1	7.5.1	248-24-00-071	ALUMINUM ELBOW BASE PC-10"	2
1.6	248-37-00-134	12" END SECTION-A	1	7.5.2	248-24-00-072	ALUMINUM ELBOW MIDD PC-10"	3
1.7	248-37-00-135	12" CRNR SECTION-B	1	7.5.3	248-24-00-074	ALUMINUM HANDLE	1
1.8	248-37-00-136	12" TOP SECTION-C	1	7.5.4	R02990	10" CIRCLE LOCK, MALE ITHPM1000	1
1.9	248-37-00-137	12" PIPE SECTION-D	1	7.5.5	R02983	10" RW COUPLER-NARROW	1
1.10	248-37-00-139	CONE HALF	2	7.5.6	248-05-00-036	CHAIN LUG	1
1.11	248-37-00-138	10" ALUM DISCH PIPE-SECTION "A"	1	7.6	248-19-00-000	10" MALE CONNECTOR PIPE ASSY (ALUM.)	1
2	248-08-00-000	10" LOWER INNER CLAMP ASSY	1				
2.1	248-08-01-000	10" LOWER OUTER CLAMP ASSY	1	7.6.1	248-19-00-053	10" MALE CONNECTOR PIPE	1
2.1.1	248-08-01-025	10" LOWER CLAMP PC	1	7.6.2	R02990	10" CIRCLE LOCK, MALE ITHPM1000	1
2.1.2	248-04-01-019	UPPER CLAMP BOLT PLATE	2	7.7	286-13-00-000	10" CLAMP AND CHAIN ASSY	1
2.2	248-03-00-050	LOWER CLAMP PIVOT BRKT	2	7.10	R07794	3/8-16 UNC FLANGE NUT - ZINC	1
3	248-08-01-000	10" LOWER OUTER CLAMP ASSY	1	7.11	R07776	3/8-16 UNC x 0.75 CARRIAGE BOLT Gr.5	1
3.1	248-08-01-025	10" LOWER CLAMP PC	1				
3.2	248-04-01-019	UPPER CLAMP BOLT PLATE	2	8	286-13-00-000	10" CLAMP AND CHAIN ASSY	1
4	248-09-00-000	10" UPPER INNER CLAMP ASSY	1	9	R02778	3" CAMLOCK M->F NPT	1
4.1	248-03-00-017	UPPER CLAMP PIVOT BRKT	2	10	R02784	3" F CAMLOCK CAP	1
4.2	248-09-01-000	10" UPPER OUTER CLAMP ASSY	1	11	R02871	12" SUPER CLAMP	1
5	248-09-01-000	10" UPPER OUTER CLAMP ASSY	1	12	R07630	7/16-14 UNC x 2 HEX BOLT GR.5	6
5.1	248-09-01-026	UPPER CLAMP HALF TUBE - 10"	1	13	R07671	7/16-14 UNC x 1.25 HEX BOLT GR.5	6
5.2	248-04-01-019	UPPER CLAMP BOLT PLATE	2	14	R07794	3/8-16 UNC FLANGE NUT - ZINC	13
6	248-16-02-108	DROP HOSE FOR 12" CAN	1	15	R07721	3/8-16 UNC x 1 CARRIAGE BOLT Gr.5	1
7	248-26-00-000	10" LAYFLAT HOSE W/ENDS KIT	1	16	R07652	5/8-11 UNC x 5 HEX BOLT GR.5	2
7.1	248-00-00-031	10" PVC LAYFLAT HOSE	1	17	R07887	5/8-11 UNC 2-WAY LOCK NUT - ZINC	2

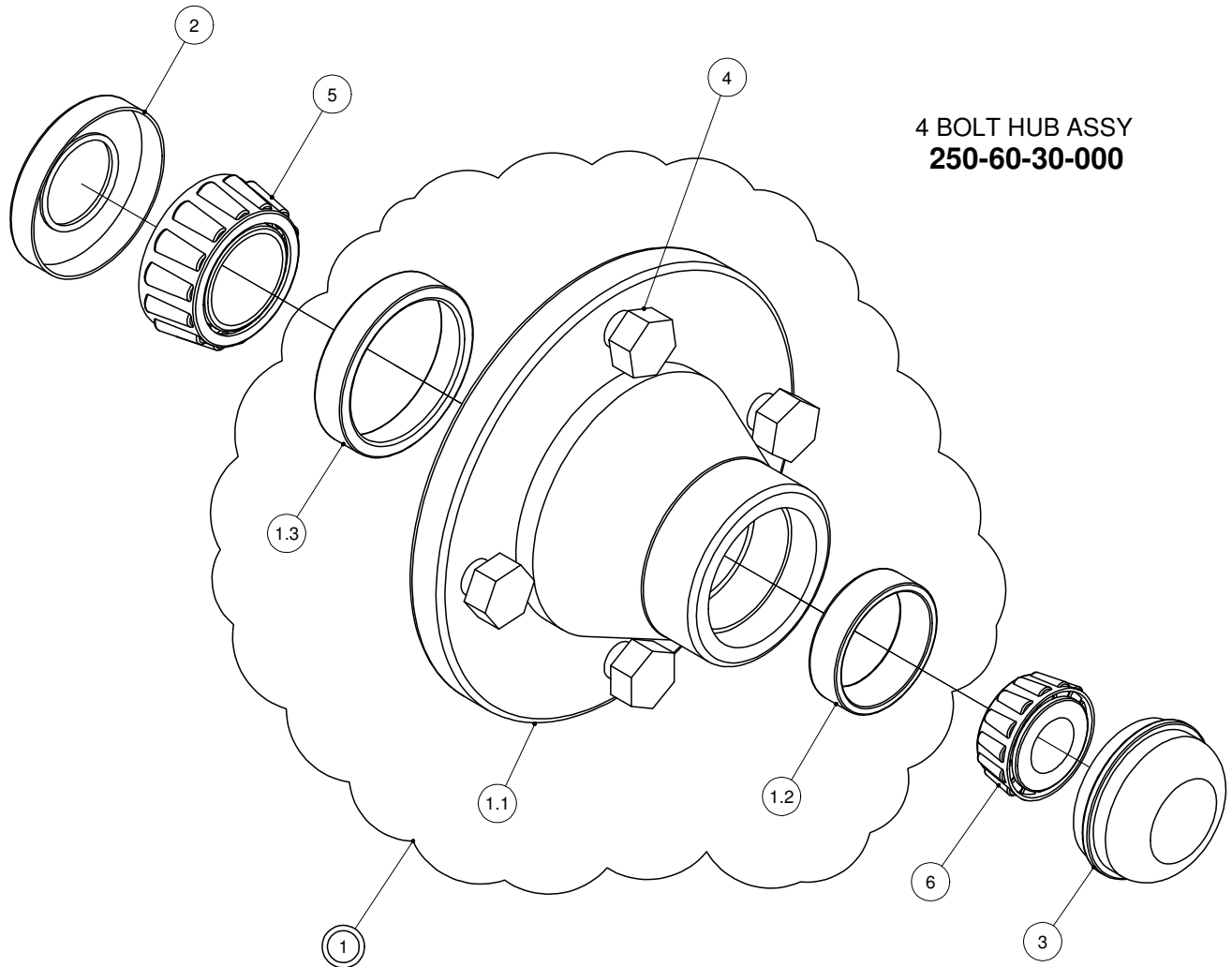
PIPE CART FRAME



PIPE CART FRAME

PARTS LIST			
ITEM	PART NUMBER	DESCRIPTION	QTY
1	248-33-00-000	2012 PIPE CART FRAME KIT	1
1.1	248-33-01-000	BASE FRAME ASSY W/ PIVOT ASSY	1
1.1.1	248-01-03-000	AXLE ASSY	1
1.1.1.1	248-01-03-023	AXLE TUBE	1
1.1.1.2	250-64-27-000	SPINDLE ASSY	2
1.1.2	248-01-00-014	STOP TUBE	4
1.1.3	248-33-02-000	INNER PIVOT ASSY	2
1.1.3.1	248-01-02-009	AXLE MOUNT TUBE	1
1.1.3.2	248-33-02-114	PIVOT SLEEVE STRAP	2
1.1.4	248-33-01-109	OUTER FRAME ARM	2
1.1.5	248-33-01-112	TOP GUSSET	1
1.1.6	248-33-01-113	OUTER FRAME PIVOT BRKT	2
1.1.7	248-01-01-037	WINCH BRKT	1
1.1.8	248-33-01-129	TONGUE TUBE	1
1.1.9	206-02-00-014	TONGE PLATE	2
1.1.10	248-33-01-130	LOWER GUSSET	1
1.1.11	248-35-00-124	STOP BAR	1
1.2	248-33-03-000	INNER FRAME ASSY	1
1.2.1	248-01-02-012	CABLE BRKT	1
1.2.2	248-33-03-115	INNER FRAME LEG	2
1.2.3	248-33-03-116	INNER FRAME GUSSET	2
1.2.4	248-33-03-117	INNER FRAME PIVOT BRKT	2
2	250-60-30-000	H-411 HUB COMPLETE	2
3	250-65-00-000	TIRE & WHEEL ASSY - 5.9 x 15	2
4	248-00-00-013	LIFT CABLE	1
5	R20142	SLOTTED HEX NUT	2
6	R08002	5/32 x 1 1/2 COTTER PIN	2
7	R07619	3/8-16 UNC x 1 HEX BOLT GR.5	3
8	R07794	3/8-16 UNC FLANGE NUT - ZINC	3
9	R10350	1 TON WORM GEAR WINCH	1
10	R09071	SERIAL NUMBER PLATE	1
11	R08152	#6 x 1/4" PAN HD SOCKET SCREW	2
12	R08077	3/16" CABLE CLAMP	2

H-411 HUB COMPLETE



**4 BOLT HUB ASSY
250-60-30-000**

PARTS LIST			
ITEM	PART NUMBER	DESCRIPTION	QTY
1	R20139	H-411 HUBS w/ CUPS	1
1.1	R20160	H411-4 BOLT HUB	1
1.2	R20130	H411 LM11910 O.CUP	1
1.3	R20129	H411 LM67010 I.CUP	1
2	R20144	OIL SEAL CRSE11	1
3	R20143	DUST CAP	1
4	R20145	WB55 1/2 x 1 WHEEL BOLT	4
5	R20159	LM67048 INNER CONE 1.25" BORE	1
6	R20158	LM11949 OUTER CONE .75" BORE	1

This Page is Intentionally Left Blank

GUARANTEE

All Husky Farm Equipment manufactured by Husky Farm Equipment Limited is guaranteed. Guarantee covers all the replacement cost or repair of all parts said to be defective from manufacture. Guarantee also covers labour installing said parts, if installed at Husky Manufacturing plant. Time and use is the essence of the guarantee. If equipment is used on a private property for an individual's use, guarantee will be in effect for twelve months from date of invoice. If equipment is used for commercial use to do custom work for money then guarantee will be in effect for three months only from date of invoice.

EXEMPTIONS FROM GUARANTEE

Cost of transportation of equipment to or from Husky Farm Equipment Limited either by customer or by Husky's service staff or cost of mail or public transportation is not covered. Tires and electric or hydraulic motors are covered by manufacturer's warranty and although Husky may assist to get warranty, Husky will not be responsible other than that allowed by manufacturer's warranty. Items subject to normal wear from use not covered by guarantee if faulty part is simply worn.