

Date Purchased _____ Machine Serial No. _____

Size of Pump _____ Options _____

The key number system in this parts book is arranged as follows:

- Key numbers with two circles denotes main assemblies.
- Key numbers with one circle are individual parts

Please order parts by number



PRIME EZE

PRIME EZE HYDRAULIC PUMP – 26 GPM ▪ 566-00-00-000

PRIME EZE HYDRAULIC PUMP –26 GPM ▪ 567-00-00-000

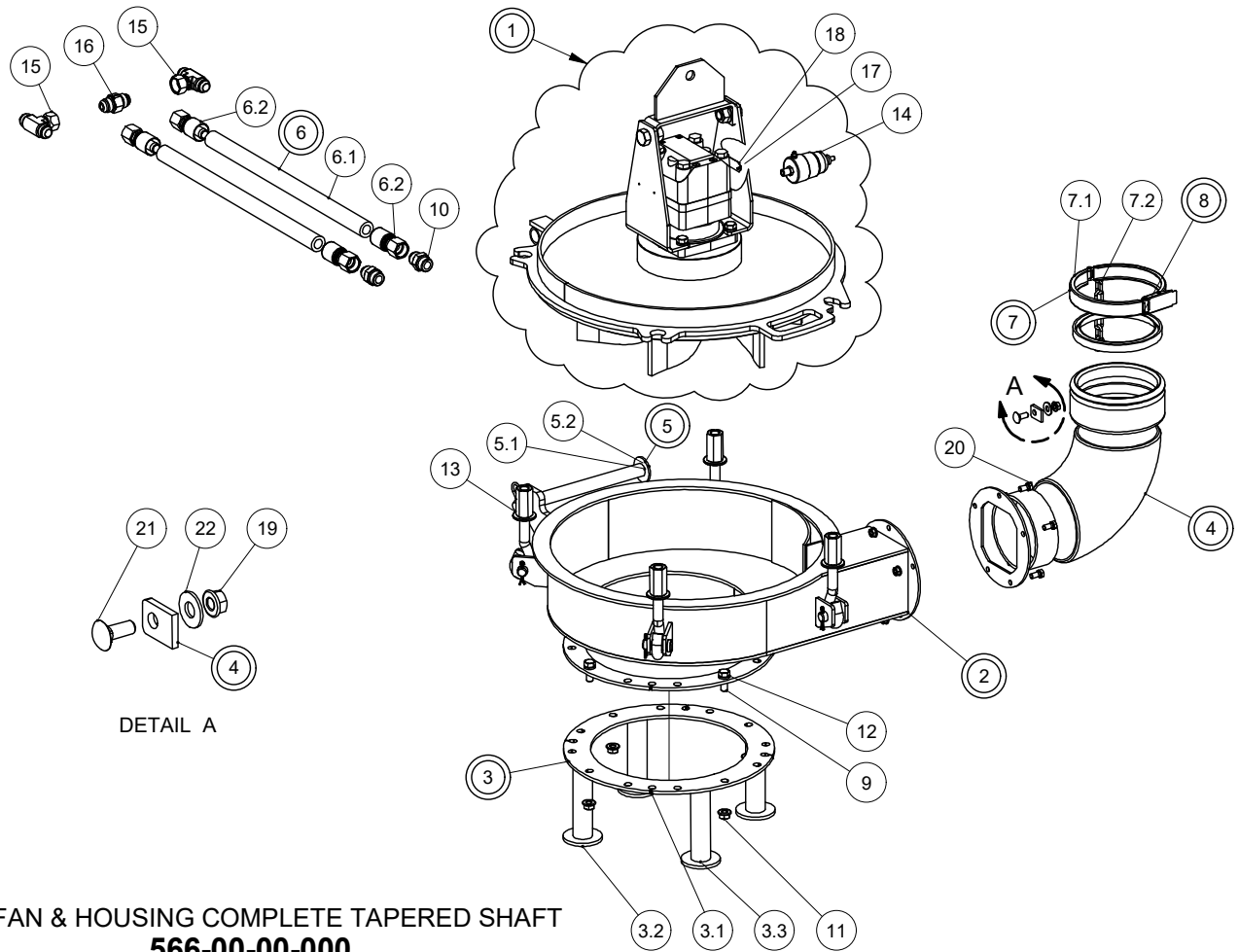
PRIME EZE HYDRAULIC PUMP –26 GPM ▪ 568-00-00-000

OPERATING INSTRUCTIONS:

- 1.
- 2.
- 3.
- 4.
- 5.
- 6.
- 7.

This Page is Intentionally Left Blank

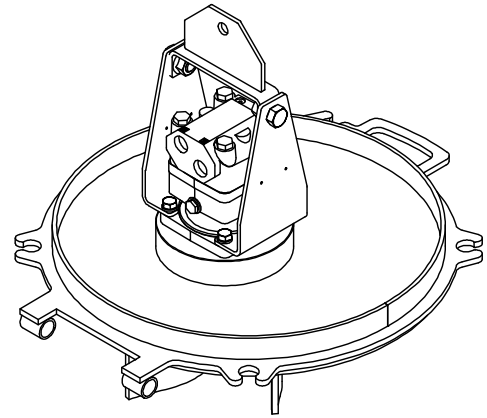
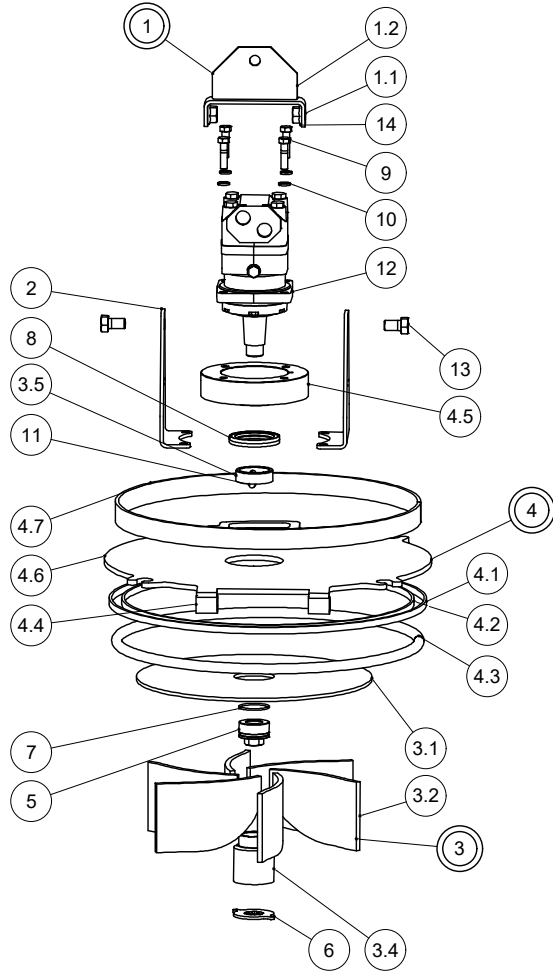
HYD FAN & HOUSING COMPLETE TAPERED SHAFT



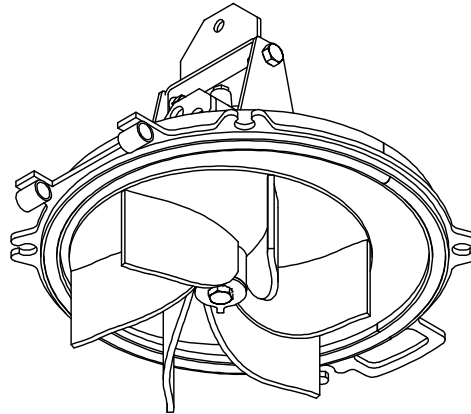
HYD FAN & HOUSING COMPLETE TAPERED SHAFT
566-00-00-000

PARTS LIST				PARTS LIST			
ITEM	PART NUMBER	DESCRIPTION	QTY	ITEM	PART NUMBER	DESCRIPTION	QTY
1	566-01-00-000	HYD FAN & COVER PLATE-TAPERED SHAFT	1	7.2	250-97-00-297	CLAMP CHAIN	1
				8	R02366	6" RUBBER GASKET	1
2	566-02-00-000	HOUSING ASSY-CHT(2007)	1	9	R07674	1/2-13 UNC x 1.25 HEX BOLT GR.5	4
3	566-03-00-000	LEG & FLANGE ASSY	1	10	R23098	ORB-12 x 3/4" JIC M. ADAPTOR	2
3.1	566-03-00-001	TANK CLEANOUT FLANGE	1	11	R07795	1/2-13 UNC FLANGE NUT - ZINC	4
3.2	566-03-00-002	TANK CLEANOUT FLANGE FOOT	4	12	R07805	1/2 LOCK WASHER - ZINC	4
3.3	566-03-00-003	TANK CLEANOUT FLANGE LEG	4	13	R07948	5/32 HAIR PIN	1
4	566-04-00-000	90 DEG ELBOW AND FLANGE ASSY - 6" SR	1	14	R10595	SPRING PRESSURE AUTO GREASE CUP	1
5	376-02-04-000	LID PIN ASSY	1	15	R23122	3/4" M. x 3/4" M. x 3/4" SW F. JIC TEE	2
5.1	376-02-04-508	LID PIN	1	16	R23447	3/4" M. JIC CHECK VALVE	1
5.2	R07827	3/4 FLAT WASHER STD - ZINC	1	17	R08152	#6 x 1/4" PAN HD SOCKET SCREW	2
6	384-35-03-000	3/4" HYDRAULIC HOSE ASSY	2	18	R09071	SERIAL NUMBER PLATE	1
6.1	384-35-03-549	3/4" HYDRAULIC HOSE	1	19	R07794	3/8-16 UNC FLANGE NUT - ZINC	6
6.2	R23006	3/4" STEM x 3/4" JIC F. SW.	2	20	R07688	3/8-16 UNC x 0.75 HEX BOLT GR.5	5
7	250-97-00-000	6" CLAMP & CHAIN ASSY	1	21	R07721	3/8-16 UNC x 1 CARRIAGE BOLT Gr.5	1
7.1	R02487	6" RING LOCK CLAMP	1	22	R07823	3/8 FLAT WASHER STD - ZINC	1

26 GPM FAN AND COVER PLATE

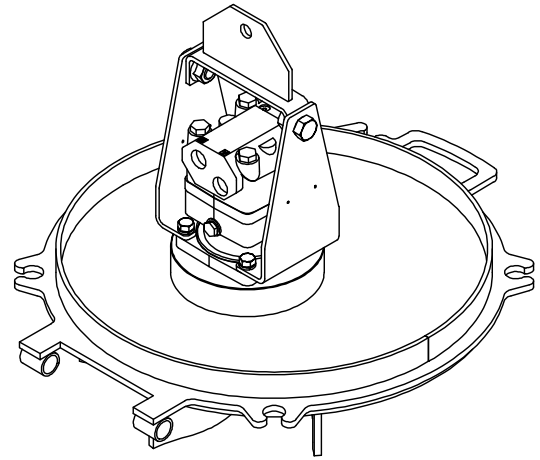
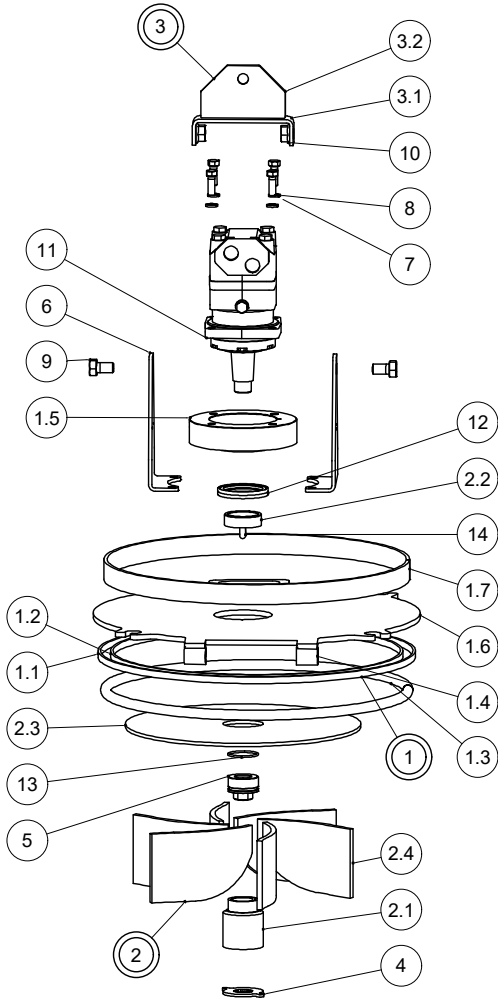


26 GPM FAN AND COVER PLATE **566-01-00-000**

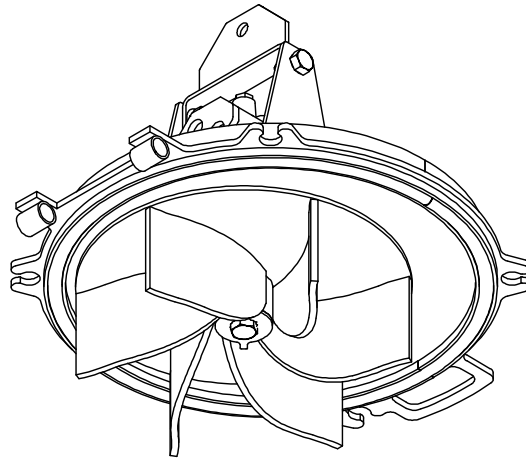


PARTS LIST				PARTS LIST			
ITEM	PART NUMBER	DESCRIPTION	QTY	ITEM	PART NUMBER	DESCRIPTION	QTY
1	566-01-01-000	LIFTING BRACKET ASSY	1	4.5	384-50-03-642	MOTOR & BEARING BOX MOUNT	1
1.1	566-01-01-007	LIFTING PLATE ATTACHMENT (LASER PART)	1	4.6	384-50-03-641	COVER PLATE-TAPERED SHAFT	1
1.2	566-01-01-006	LIFTING PLATE (LASER PART)	1	4.7	384-27-02-534	REIN. RING-1000 RPM COVER PLATE	1
2	566-01-01-005	PUMP LIFT BRKT (LASER PART)	2	5	384-50-01-648	TAPERED SHAFT CAP NUT	1
3	384-56-01-000	TAPERED SHAFT FAN ASSY-6 BLADE	1	6	384-50-01-647	TAPERED HUB LOCKING PLATE	1
3.4	384-50-02-639	TAPERED IMPELLER HUB	1	7	R23444	O-RING #226 - 2.25" OD x 2" ID	1
3.5	R23443	HARDENED SEAL COLLAR - 2.75" OD	1	8	R23441	GREASE SEAL HM21 - 2.750" x 3.751" x .25"	2
3.1	384-56-01-657	FAN BACK PLATE ETCHED X6- CHT	1	9	R07639	1/2-13 UNC x 2 HEX BOLT GR.5	4
3.2	384-56-01-656	IMPELLER BLADE TAPERED SHAFT- CHT	6	10	R07805	1/2 LOCK WASHER - ZINC	4
4	384-50-03-000	COVER PLATE ASSY - TAPERED SHAFT	1	11	R23507	MACHINE KEY - 7/16" SQ x 1-1/4"	1
4.1	384-20-03-295	OUTER RING	1	12	R23506	M+S HYD MOTOR-MLHT160 TAPERED SHAFT-26 GPM	1
4.2	384-20-03-296	INNER RING	1	13	R07841	3/4-10 UNC x 1.25 HEX BOLT GR.5	2
4.3	384-20-00-301	RUBBER SEAL	1	14	R08433	3/4-10 UNC FLANGE NUT - ZINC	2
4.4	384-20-03-570	HATCH PIN SLEEVE	2				

33 GPM FAN AND COVER PLATE

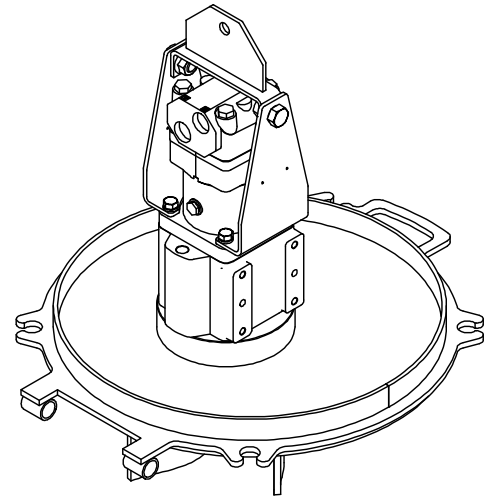
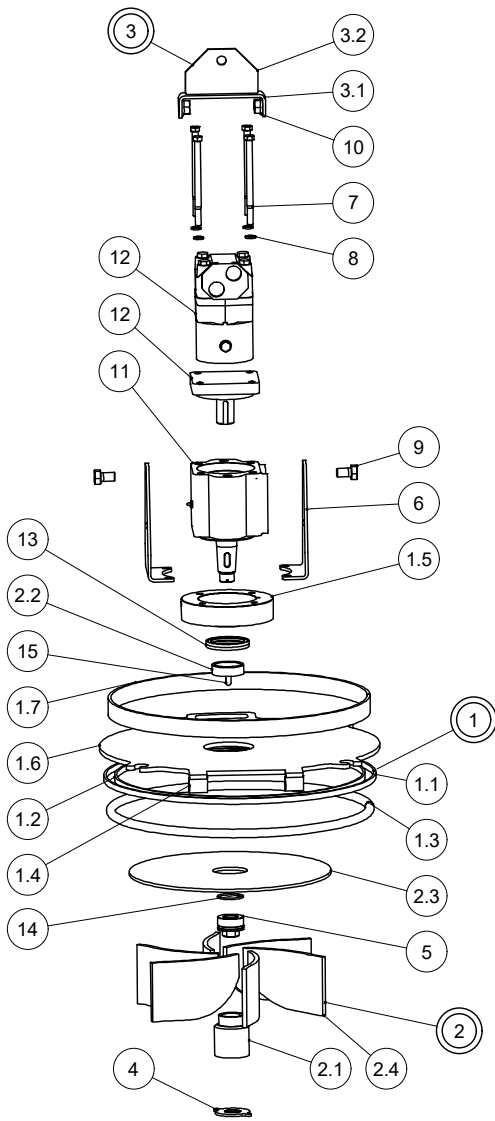


**33 GPM FAN AND COVER PLATE
567-01-00-000**

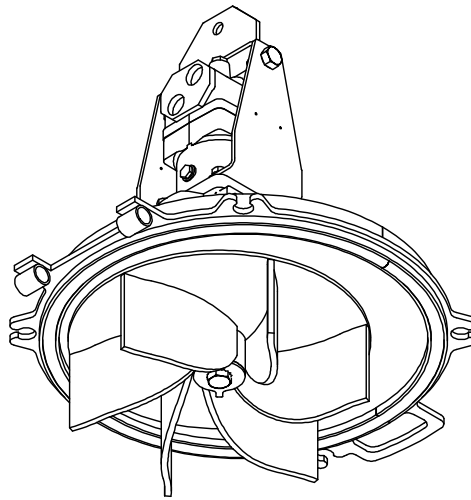


PARTS LIST				PARTS LIST			
ITEM	PART NUMBER	DESCRIPTION	QTY	ITEM	PART NUMBER	DESCRIPTION	QTY
1	384-50-03-000	COVER PLATE ASSY - TAPERED SHAFT	1	3.1	566-01-01-007	LIFTING PLATE ATTACHMENT (LASER PART)	1
1.1	384-20-03-295	OUTER RING	1	3.2	566-01-01-006	LIFTING PLATE (LASER PART)	1
1.2	384-20-03-296	INNER RING	1	4	384-50-01-647	TAPERED HUB LOCKING PLATE	1
1.3	384-20-00-301	RUBBER SEAL	1	5	384-50-01-648	TAPERED SHAFT CAP NUT	1
1.4	384-20-03-570	HATCH PIN SLEEVE	2	6	566-01-01-005	PUMP LIFT BRKT (LASER PART)	2
1.5	384-50-03-642	MOTOR & BEARING BOX MOUNT	1	7	R07638	1/2-13 UNC x 1.5 HEX BOLT GR.5	4
1.6	384-50-03-641	COVER PLATE-TAPERED SHAFT	1	8	R07805	1/2 LOCK WASHER - ZINC	4
1.7	384-27-02-534	REIN. RING-1000 RPM COVER PLATE	1	9	R07841	3/4-10 UNC x 1.25 HEX BOLT GR.5	2
2	384-56-01-000	TAPERED SHAFT FAN ASSY-6 BLADE	1	10	R08433	3/4-10 UNC FLANGE NUT - ZINC	2
2.1	384-50-02-639	TAPERED IMPELLER HUB	1	11	R22590	M+S HYD MOTOR-MLHT200 TAPERED SHAFT-33 GPM	1
2.2	R23443	HARDENED SEAL COLLAR - 2.75" OD	1	12	R23441	GREASE SEAL HM21 - 2.750" x 3.751" x .25"	2
2.3	384-56-01-657	FAN BACK PLATE ETCHED X6- CHT	1	13	R23444	O-RING #226 - 2.25" OD x 2" ID	1
2.4	384-56-01-656	IMPELLER BLADE TAPERED SHAFT- CHT	6	14	R23507	MACHINE KEY - 7/16" SQ x 1-1/4"	1
3	566-01-01-000	LIFTING BRACKET ASSY	1				

40 GPM FAN AND COVER PLATE

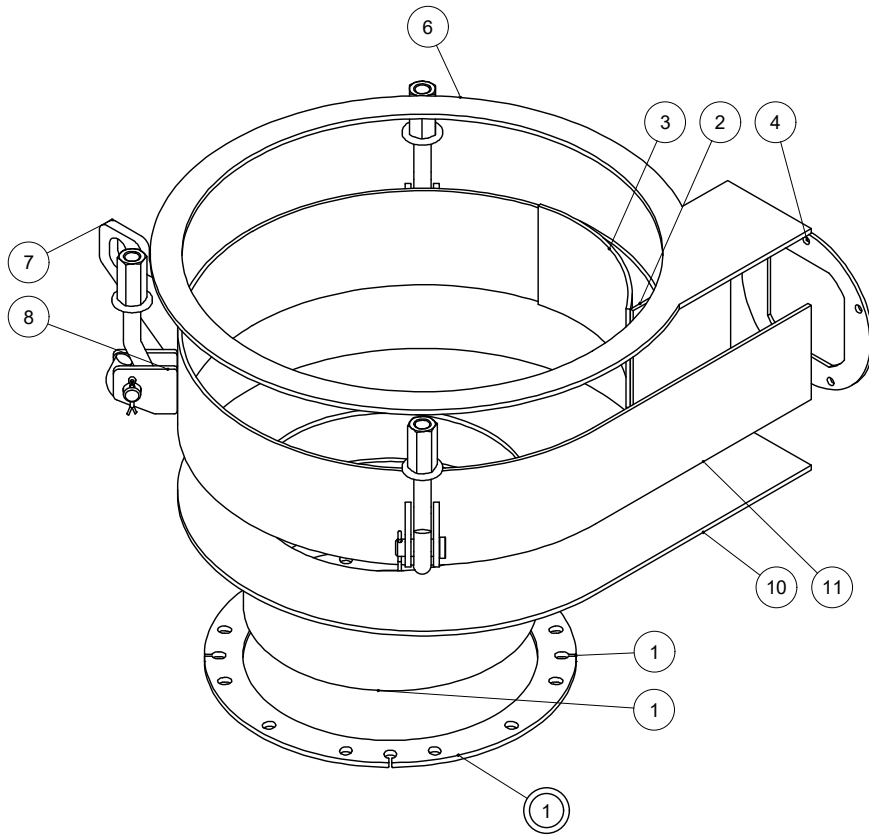


**40 GPM FAN AND COVER PLATE
568-01-00-000**

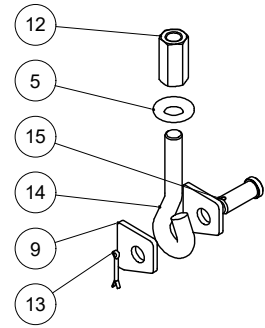


PARTS LIST				PARTS LIST			
ITEM	PART NUMBER	DESCRIPTION	QTY	ITEM	PART NUMBER	DESCRIPTION	QTY
1	384-50-03-000	COVER PLATE ASSY - TAPERED SHAFT	1	3.1	566-01-01-007	LIFTING PLATE ATTACHMENT (LASER PART)	1
1.1	384-20-03-295	OUTER RING	1	3.2	566-01-01-006	LIFTING PLATE (LASER PART)	1
1.2	384-20-03-296	INNER RING	1	4	384-50-01-647	TAPERED HUB LOCKING PLATE	1
1.3	384-20-00-301	RUBBER SEAL	1	5	384-50-01-648	TAPERED SHAFT CAP NUT	1
1.4	384-20-03-570	HATCH PIN SLEEVE	2	6	566-01-01-005	PUMP LIFT BRKT (LASER PART)	2
1.5	384-50-03-642	MOTOR & BEARING BOX MOUNT	1	7	R07682	1/2-13 UNC x 7.5 HEX BOLT GR.5	4
1.6	384-50-03-641	COVER PLATE-TAPERED SHAFT	1	8	R07805	1/2 LOCK WASHER - ZINC	4
1.7	384-27-02-534	REIN. RING-1000 RPM COVER PLATE	1	9	R07841	3/4-10 UNC x 1.25 HEX BOLT GR.5	2
2	384-56-01-000	TAPERED SHAFT FAN ASSY-6 BLADE	1	10	R08433	3/4-10 UNC FLANGE NUT - ZINC	2
2.1	384-50-02-639	TAPERED IMPELLER HUB	1	11	R22591	OVERHUNG LOAD ADAPTER - L800221	1
2.2	R23443	HARDENED SEAL COLLAR - 2.75" OD	1	12	R22600	112-1065 CHARLYN MOTOR-6000 40 GPM	1
2.3	384-56-01-657	FAN BACK PLATE ETCHED X6- CHT	1	13	R23441	GREASE SEAL HM21 - 2.750" x 3.751" x .25"	2
2.4	384-56-01-656	IMPELLER BLADE TAPERED SHAFT- CHT	6	14	R23444	O-RING #226 - 2.25" OD x 2" ID	1
3	566-01-01-000	LIFTING BRACKET ASSY	1	15	R23507	MACHINE KEY - 7/16" SQ x 1-1/4"	1

HOUSING ASSY-CHT(2007)

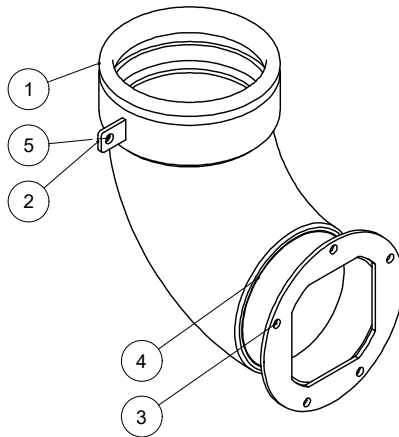


HOUSING ASSY-CHT(2007)
566-02-00-000



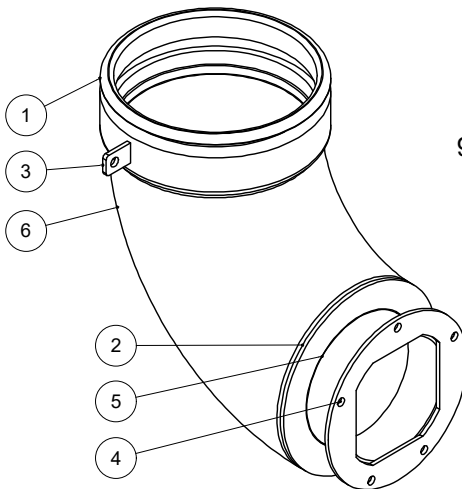
PARTS LIST			
ITEM	PART NUMBER	DESCRIPTION	QTY
1	384-34-02-000	12" INLET ASSY	1
2	357-48-01-230	CHT FAN HOUSING VERTICAL PC	1
3	357-48-01-231	CHT HOUSING BAND AID	1
4	364-01-03-376	DISCHARGE RING	1
5	376-02-00-577	MANWAY WASHER	4
6	384-20-01-289	HOUSING FLANGE	1
7	384-20-01-290	DOOR HINGE	1
8	384-20-01-423	HOUSING LUG	6
9	384-20-01-424	SHORT HOUSING LUG	2
10	384-34-01-585	CHT HOUSING BACK PLATE W/RD HOLE	1
11	566-02-00-009	CHT HOUSING BAND	1
12	R07800	3/4-10 UNC COUPLING NUT - ZINC	4
13	R08207	5/32 x 1 1/2 COTTER PIN - SS	4
14	R08442	3/4" EYE BOLT	4
15	R08443	EYE BOLT PIN	4

90 DEG ELBOW AND FLANGE ASSY OPTIONS



90 DEG ELBOW AND FLANGE ASSY - 6" SR
566-04-00-000

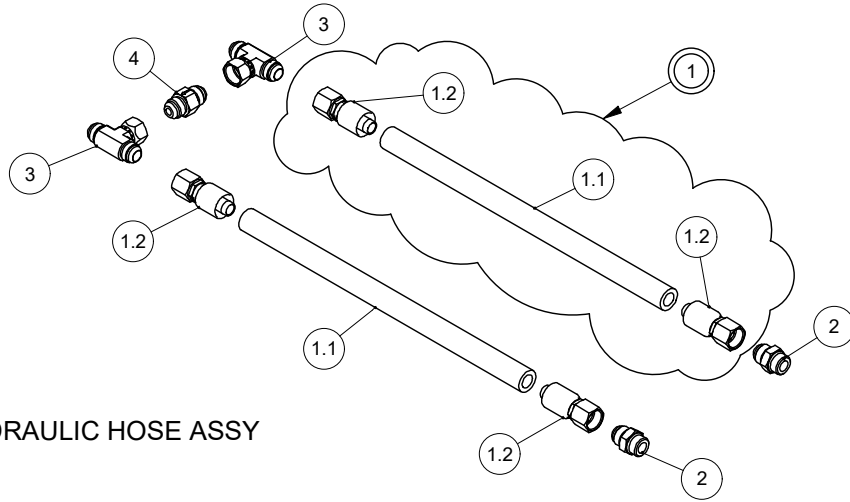
PARTS LIST			
ITEM	PART NUMBER	DESCRIPTION	QTY
1	200-58-00-242	6" COUPLING BASE TUBE	1
2	250-96-00-298	CHAIN LUG	1
3	364-01-03-376	DISCHARGE RING	1
4	566-04-00-004	6" SR-DISCHARGE ELBOW TUBE EXTENSION	1
5	R02428	6" x 90° SCH 40 WELD ELBOW - SR	1



90 DEG ELBOW AND FLANGE ASSY - 8" SR
566-05-00-000

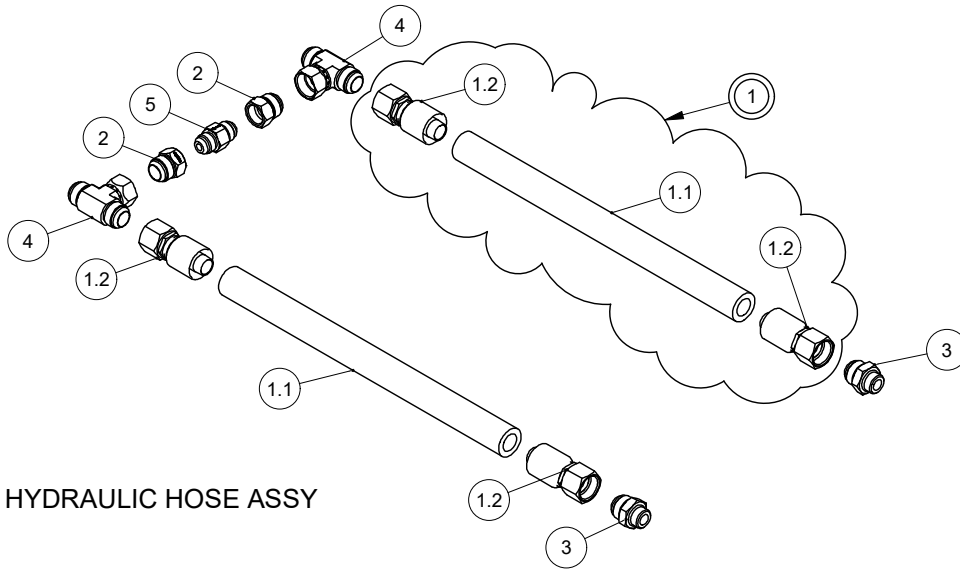
PARTS LIST			
ITEM	PART NUMBER	DESCRIPTION	QTY
1	200-69-01-300	8" COUPLING	1
2	250-09-07-032	STANDPIPE RING	1
3	250-96-00-298	CHAIN LUG	1
4	364-01-03-376	DISCHARGE RING	1
5	566-04-00-004	6" SR-DISCHARGE ELBOW TUBE EXTENSION	1
6	R03018	8" SCH 40 WELD ELBOW - SR	1

HYDRAULIC HOSE ASSY OPTIONS



3/4" HYDRAULIC HOSE ASSY

PARTS LIST			
ITEM	PART NUMBER	DESCRIPTION	QTY
1	384-35-03-000	3/4" HYDRAULIC HOSE ASSY	2
1.1	384-35-03-549	3/4" HYDRAULIC HOSE	1
1.2	R23006	3/4" STEM x 3/4" JIC F. SW.	2
2	R23098	ORB-12 x 3/4" JIC M. ADAPTOR	2
3	R23122	3/4" M. x 3/4" M. x 3/4" SW F. JIC TEE	2
4	R23447	3/4" M. JIC CHECK VALVE	1



1" HYDRAULIC HOSE ASSY

PARTS LIST			
ITEM	PART NUMBER	DESCRIPTION	QTY
1	384-53-01-000	1" HYDRAULIC HOSE ASSY	2
1.1	384-53-01-649	1" HYDRAULIC HOSE	1
1.2	R23008	1" STEM x 1" JIC F. SW	2
2	R23084	3/4" JIC F. x 1" JIC M. BUSHING	2
3	R23099	ORB-12 x 1" JIC M. ADAPTER	2
4	R23123	1" M. x 1" M. x 1" SW F. JIC TEE	2
5	R23447	3/4" M. JIC CHECK VALVE	1

GUARANTEE

All Husky Farm Equipment manufactured by Husky Farm Equipment Limited is guaranteed. Guarantee covers all the replacement cost or repair of all parts said to be defective from manufacture. Guarantee also covers labour installing said parts, if installed at Husky Manufacturing plant. Time and use is the essence of the guarantee. If equipment is used on a private property for an individual's use, guarantee will be in effect for twelve months from date of invoice. If equipment is used for commercial use to do custom work for money then guarantee will be in effect for three months only from date of invoice.

EXEMPTIONS FROM GUARANTEE

Cost of transportation of equipment to or from Husky Farm Equipment Limited either by customer or by Husky's service staff or cost of mail or public transportation is not covered. Tires and electric or hydraulic motors are covered by manufacturer's warranty and although Husky may assist to get warranty, Husky will not be responsible other than that allowed by manufacturer's warranty. Items subject to normal wear from use not covered by guarantee if faulty part is simply worn.